

**END ROAD WORK**

BEGIN APPROACH  
STA 57+50.00  
DETOUR STATION  
7+00

BEGIN PROJECT  
STA 58+50.00  
30' R  
(TYP)

STA. 60+65.00 MAINLINE  
STA. 16+77.00 CHANNEL LINE  
 $\Delta = 90^\circ$  TO TANGENT

BEGIN BRIDGE  
STA 60+92.00

END BRIDGE  
STA 61+76.00

STONE FILL  
TYPE III

SPECIAL PROVISION  
(DRY HYDRANT)

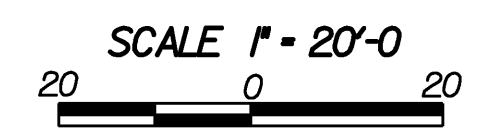
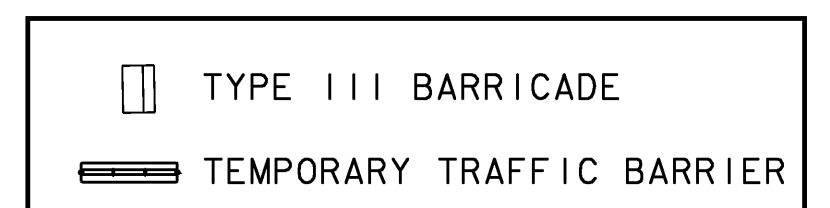
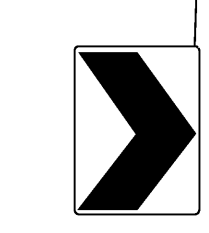
VT ROUTE 102

VT 102  
TO LEMINGTON

ROAD WORK  
1500 FT

ROAD WORK  
1000 FT

15  
MPH



**TRAFFIC CONTROL SHEET #1**

PROJECT NAME: Canaan	PLOT DATE: 18-AUG-2008
PROJECT NUMBER: ER ST 0271(16)	DRAWN BY: T. Husk
FILE NAME: Structures/04c098+cs.dgn	CHECKED BY: S. SCRIBNER
PROJECT LEADER: M. Evans-Mongeon	SHEET 26 OF 66
DESIGNED BY: S. Scribner	

MATCHLINE STA 62+25